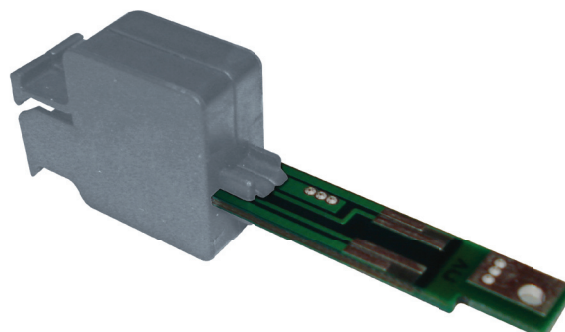


# MA-CC

Network Grounding Module.

## Application

It is used to provide grounding for external network terminals.



MA-CC Grounding Module temporarily disconnects the pair from the network, providing permanent ground to inactive pairs subjected to electrical disturbance, avoiding noise induction on adjacent circuits. The commutation equipment stays off when this device is used. It has a thermoplastic isolating housing in a grey color, fireless propagating. It can optionally be supplied in other different colors. MA-CC Grounding Module has 3 connections made over an Integrated Circuit Plate with tin bath, 2 of them connected to the network and the other to ground. Extremely compact connection to telephone and data networks is provided, due to its mechanical conception with "plug-in" type

connection to be used in \*Cylindrical Contac type terminal block.

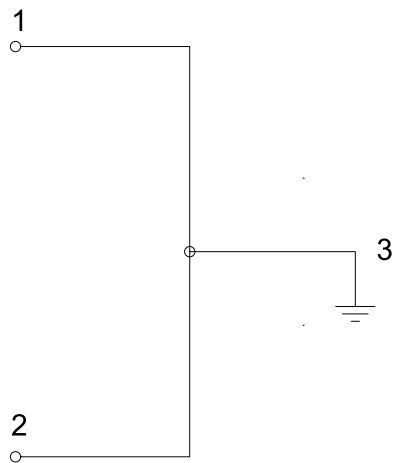
\*Cylindrical Contac type terminal block uses an automatic stripping function technology (IDC) for cables. It is made of a plastic base, with IDC connectors for fixing net cables and sockets for module insertion, attached to a mounting bar that is used as fixing and ground elements. It is compact to be used in conductors' high density systems and it is applied to link the external net to the client's internal network and it can also be used in telephone distribution boxes, buildings' utilities and main telephone boards.

According to #235-430-725 Telebrás Practice.

## Functional Characteristics:

Characteristic	Unity	MA-CC
Number of conductors	unity	2
Connection	-	3 pin "plug-in" type
Packing	-	Polycarbonate injected plastic box, fireless propagating
Dimension	mm	60.0 x 21.0 x 10.0
Weight	g	6.6

Mechanical Drawing:



Electrical Circuit:

