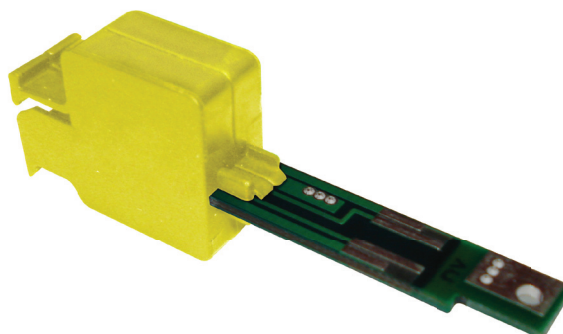


## MC-CC

Continuity Network Module for telecommunication equipments, pluggable in Cylindrical Contact blocks.

### Application

It is used to provide electrical continuity to equipments at telecommunication stations.



MC-CC Continuity Module offers electrical continuity from the external net to the telephone station equipment and "by-pass" to the data communication circuits.

It has a thermoplastic isolating housing, fireless propagating, in a yellow color when used for electrical continuity tests and in a green one, for "by-pass" in data circuits. It can optionally be supplied in other different colors.

The module's identification (ID) and also the manufacturing's data (week: XX and year: YY) are on its top, which determines the batch.

MC-CC Continuity Module has 4 connections manufactured on Integrated Card Print with a tin bath: 2 of them are connected to the network and the other 2 are for equipments.

Extremely compact connection to telephone and data networks is provided, due to its mechanical conception with "plug-in" type connection to be used in \*Cylindrical Contac terminal block.

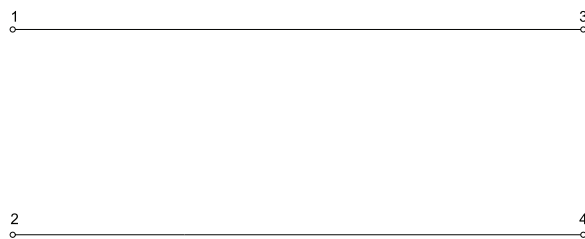
\*Cylindrical Contac terminal block uses a fast plug technology (IDC) to connect cables. It is made of a plastic base, with IDC connectors for fixing net cables and sockets for module insertion, attached to a mounting bar that is used as fixing and ground elements. It is compact to be used in conductors' high density systems and it is applied to link the external net to the client's internal network and it can also be used in telephone distribution boxes, buildings' utilities and main telephone boards.

According to # 235-430-725 Telebrás Practice.

### Functional Characteristics:

Characteristic	Unity	MC-CC
Number of conductors	unity	2
Connection	-	4 pin "plug-in" type
Packing	-	Polycarbonate injected plastic box, fireless propagating
Dimension	mm	60.0 x 21.0 x 10.0
Weight	g	6.6

Mechanical Drawing:



Electrical Circuit:

